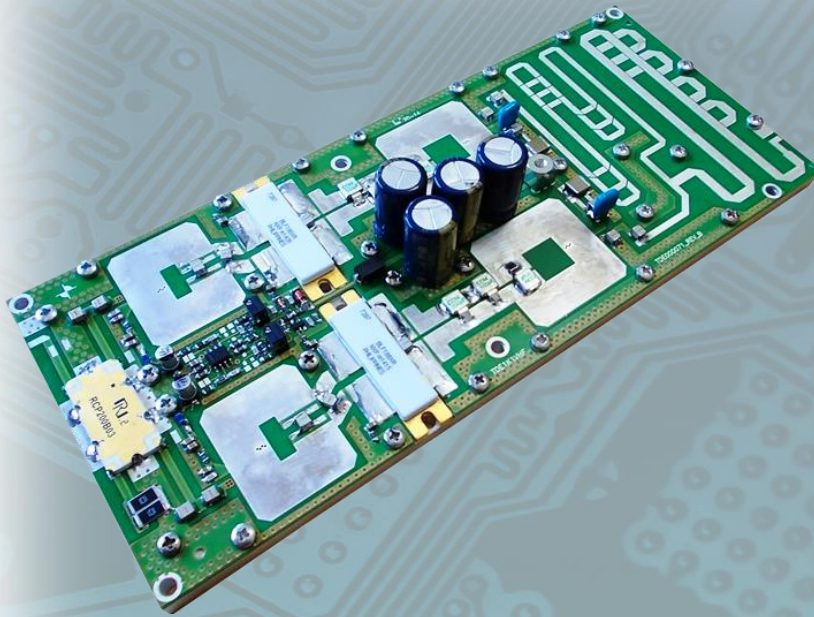


Broadcasting



TDE1K1VHF

Characteristics

TDE1K1VHF

is a Doherty VHF high power amplifier based on BLF188XR LDMOS device in a SOT539A ceramic package.

TDE1K1VHF

is a classic Doherty amplifier. The main section works in AB class and the peak section works in C class.

MAIN FEATURES

- High Gain
- High Ruggedness
- High Efficiency

DVB-T/T2 Performance Summary

Parameter	Min.	Typ.	Max.	Units	Note
Power	200	250		W_{rms}	
Frequency Range	170		240	MHz	(*)
Gain	20	21		dB	
Input Return Loss		-18		dB	
Voltage Supply		48	50	V_{dc}	
Bias Current		2.5		A	
Shoulders Level	-37			dB_c	(*)
Efficiency	45			%	(***)



tde@tdeitaly.com



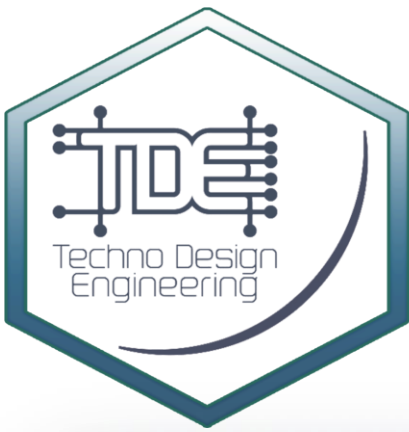
www.tdeitaly.com



(+39) 0765484028



TDE - Techno Design Engineering
Via Tiberina, 49
00065 Fiano Romano (RM), Italy



Broadcasting

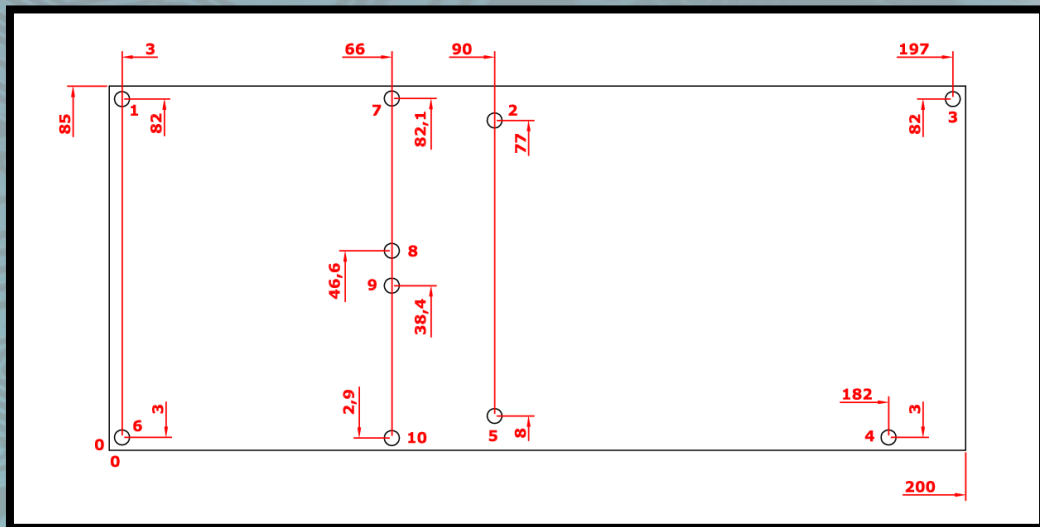
Notes

- (*) The classic Doherty design is narrowband. In order to cover the whole frequency band, this amplifier needs a different tuning for different working frequencies
- (**) The shoulder level is referred to typical power out and with pre-correction
- (***) The efficiency is referred to typical power out

Screws Type

- **Screws point 1-2-3-4-5-6-7-8-9-10**
M3 socket head cap screws
+ 10 split lock washers WZ \varnothing 3.5
+ 10 flat washers WZ \varnothing 3.5

Mechanical Specifications



TDE reserve the right to make changes to the product(s) or information contained herein without notice. TDE doesn't assume responsibility for any errors which may appear in this document. Warranty information applicable to the product identified here in is available upon request. Nothing contained herein shall constitute a warranty, representation or guarantee of any kind. TDE expressly disclaims all other warranties, express and/or implied including but not limited to warranties of merchantability, and of fitness for a particular purpose, use or application.

No part of this document may be copied or reproduced in any form or by any means without the prior written consent of TDE.



tde@tdeitaly.com



www.tdeitaly.com



(+39) 0765484028



TDE - Techno Design Engineering
Via Tiberina, 49
00065 Fiano Romano (RM), Italy