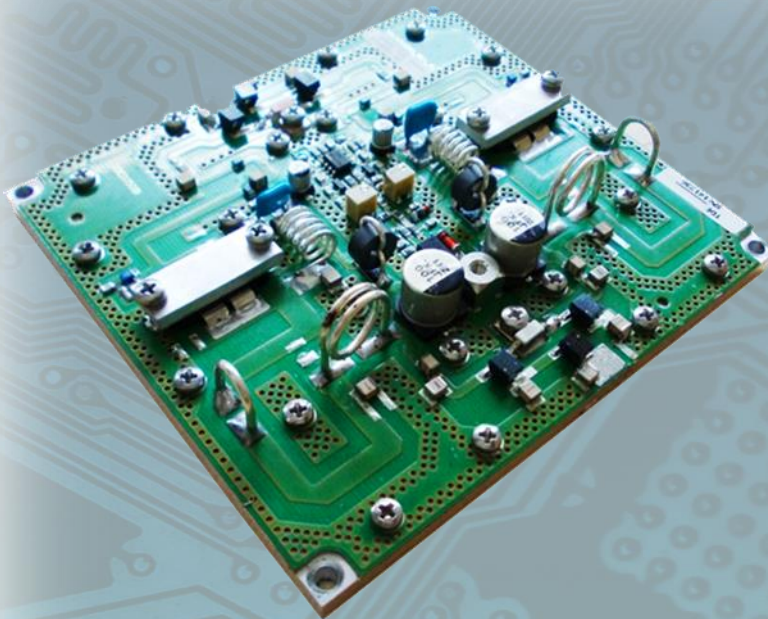


Broadcasting



TDE050BI

Characteristics

TDE050BI

is a broadband VHF medium power amplifier based on MRF6V2150NR1 LDMOS device in a TO-270 WB-4 plastic package.

TDE050BI

works in AB class and it is able to cover the whole frequency band 54-88 MHz.

MAIN FEATURES

- High Gain
- High Linearity

Analog TV Performance Summary

Parameter	Min.	Typ.	Max.	Units	Note
Power	50	60		W_{ps}	
Frequency Range	54		88	MHz	
Gain	24	26		dB	
Input Return Loss		-15		dB	
Voltage Supply		48	50	V_{dc}	
Bias Current		3.0		A	
IMD Level	50			dB_c	(*)
Efficiency	30			%	(**)



tde@tdeitaly.com



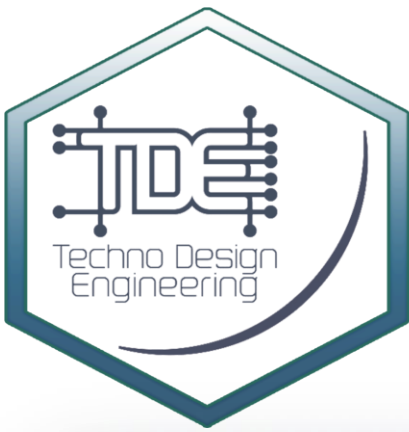
www.tdeitaly.com



(+39) 0765484028



TDE - Techno Design Engineering
Via Tiberina, 49
00065 Fiano Romano (RM), Italy



Broadcasting

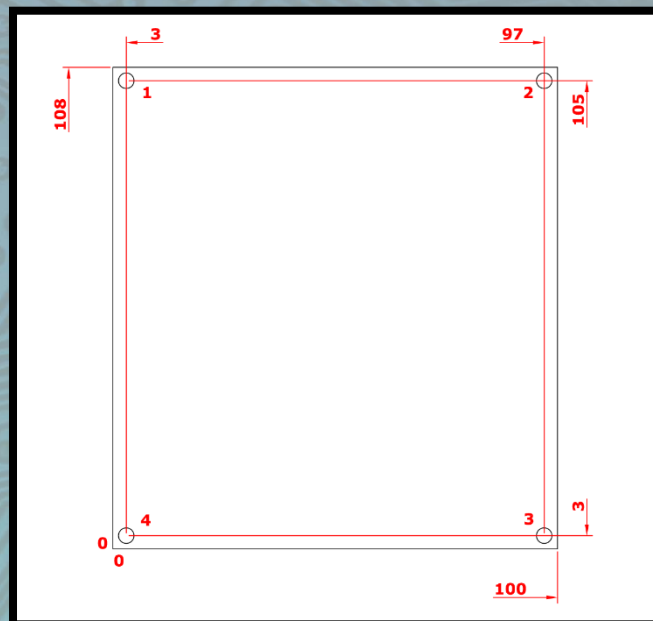
Notes

- (*) The IMD level is referred to typical power out
- (**) The efficiency is referred to typical power out

Screws Type

- **Screws point 1-2-3-4**
M3 socket head cap screws
+ 4 split lock washers WZ \varnothing 3.5
+ 4 flat washers WZ \varnothing 3.5

Mechanical Specifications



TDE reserve the right to make changes to the product(s) or information contained herein without notice. TDE doesn't assume responsibility for any errors which may appear in this document. Warranty information applicable to the product identified here in is available upon request. Nothing contained herein shall constitute a warranty, representation or guarantee of any kind. TDE expressly disclaims all other warranties, express and/or implied including but not limited to warranties of merchantability, and of fitness for a particular purpose, use or application.

No part of this document may be copied or reproduced in any form or by any means without the prior written consent of TDE.



tde@tdeitaly.com



www.tdeitaly.com



(+39) 0765484028



TDE - Techno Design Engineering
Via Tiberina, 49
00065 Fiano Romano (RM), Italy